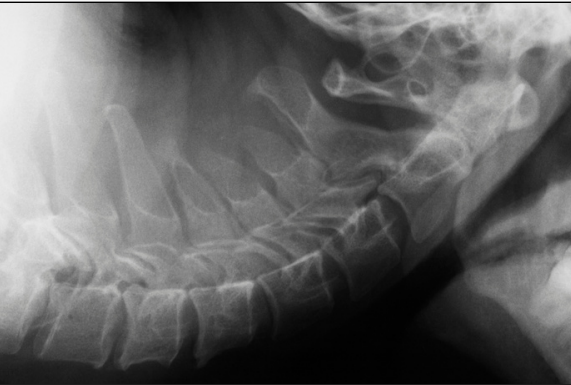


FACT SHEET

DR DAN
BATES
BSC(HTONS), B.MED, FACSEP

BACK, NECK &
JOINT PAIN



PATIENT INFORMATION FOR NON-SEDATED PROCEDURES

You have been scheduled for a short admission to the hospital for your procedure. This document provides important information to help you prepare for your admission.

BEFORE YOUR PROCEDURE

Your admission confirmation letter outlines any specific instructions you need to follow. These instructions have been determined by our clinical team.

Please complete the admission forms provided to you and return to the hospital prior to your admission.

THE DAY OF YOUR PROCEDURE

Please arrive promptly at your admission time.

DO NOT bring any valuables to the hospital

DO NOT wear jewellery, makeup, or nail polish.

Please shower on the morning of your procedure and wear clean, comfortable clothing that is easy to remove.

It is hospital policy that you do not drive after your procedure. You will need to provide the hospital staff with the contact details of the adult person responsible for escorting you home.

AFTER YOUR PROCEDURE

You will be taken to the recovery area where the hospital nurses will monitor your progress and check your procedure site.

If this is a diagnostic procedure, you will be provided with a Pain Chart (Operation Report). Recovery nurses will assist you with this form. Once completed and returned to us, we will contact you to discuss further treatment options.

If you experience a medical emergency, please dial triple zero for an ambulance, or process to your nearest emergency department.

ADMISSION

Pre-admission staff will confirm that your details are correct and prepare you for the procedure. Whilst we make every attempt to minimise wait time, there may be some unforeseen delays. Depending on your procedure, you may stay at the hospital for anywhere between 2-4 hours.

PAYMENT

A quote for your out-of-pocket expenses will be provided to you prior to admission. You will also receive a quote from your doctor for their services and a quote for any imaging conducted.

Private or Uninsured Patients:

You will be required to pay the hospital admission fee in full on the day of your procedure. The hospital can provide you with a quote for any other expenses associated with your admissions.

WorkCover, TAC or DVA will be billed directly where applicable.

FACT SHEET

DR DAN
BATES
BSC.(HONS), B.MED, FACSEP

BACK, NECK &
JOINT PAIN

LOCAL ANAESTHETIC

You may return to all your normal activities as soon as you wish unless instructed otherwise. You may experience some soreness once the local anaesthetic wears off. This is normal, but if the discomfort persists you can call the Metro Pain Group nurses on 03 8548 0339 or consult your GP.

CORTISONE

If your injection has included Cortisone, you may experience mild reactions like facial flushing or a feeling of feverishness. These can be relieved with a simple antihistamine available from your local pharmacy. Please note that Cortisone may cause changes to your blood sugar level.

RESCHEDULING & ENQUIRIES

Should you have any enquiries or require rescheduling of your procedure, please notify the Clinical Support Team on 03 8548 0339.

FOR MORE INFORMATION



drdanbates.com.au



teambates@metropain.com.au



03 8548 0339
03 9595 6110



Monash House,
Ground Floor
271 Clayton Road
Clayton VIC 3168



DISCLAIMER

Please note the contents contained in this Patient Fact Sheet are not intended as a substitute for your own independent health professional's advice, diagnosis or treatment. At Metro Pain Group, we assess every patient's condition individually. As leaders in pain intervention, we aim to provide advanced, innovative, and evidence-based treatments tailored to suit each patient. As such, recommended treatments and their outcomes will vary from patient to patient. If you would like to find out whether our treatments are suitable for your condition, please speak to one of our doctors at the time of your consultation.